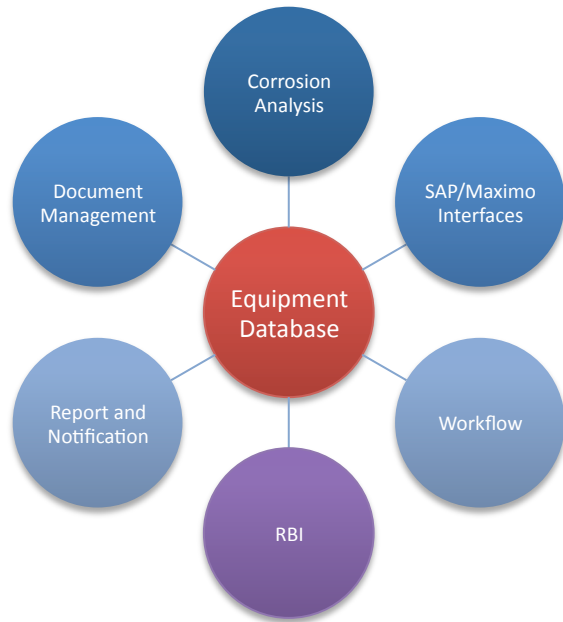
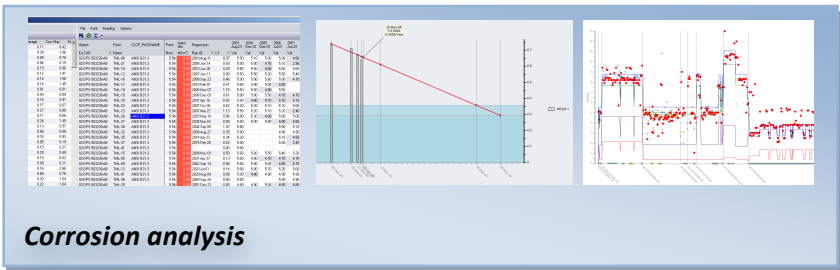
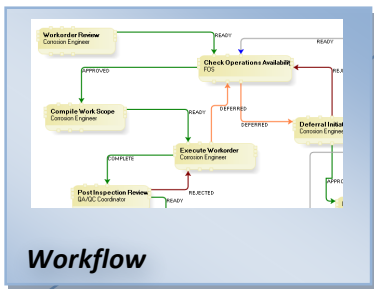


Credo 5



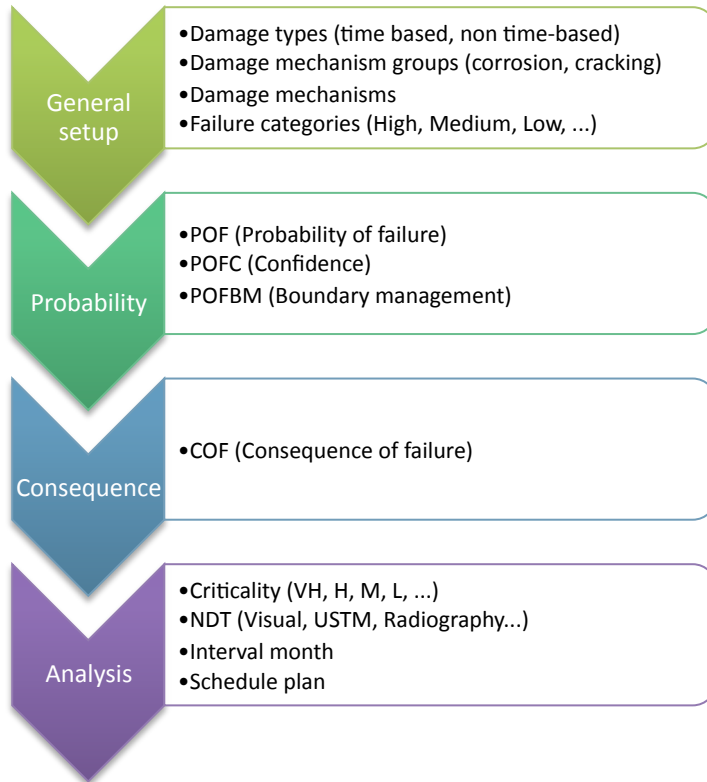
- Credo5 is an integrated system
- The Equipment Database is the core module, upon which all the other modules are built
- Additional modules extend the standard functionalities
- Tight integration: data available in all the modules



Consequence	Probability	Confidence	Application
SAFETY	SMALL	Low	None/Minimal
SAFETY	CATASTROPHIC	High	High
ENVIRONMENT	SMALL	None/Minimal	None/Minimal
ENVIRONMENT	MEDIUM	None/Minimal	None/Minimal
ENVIRONMENT	CATASTROPHIC	Low	Low
BUSINESS	SMALL	Medium	Medium
BUSINESS	MEDIUM	Medium	Medium
BUSINESS	CATASTROPHIC	Medium	Medium

RBI module

- Integrated with equipment and inspection database
- Customizable matrices
- Quantitative interval of inspection
- Decision support for team based analysis



This is a summary of the whole Credo5 RBI model.

The Credo5 model can be regarded as a **semi quantitative** because the remaining life value can be derived directly from the Credo calculated corrosion system.

The **output** is an **Inspection Plan** that corresponds to calculated Risk.

An Inspection Plan describes the Inspection Technique (NDT) and interval in months.

Consequence	Probability	Confidence	Application	Failure Category	Level	Renewal Date	Time	Comments
CUI Carbon Steel 1 (small bore)	SMALL	Low	TIMEBASED	SMALL	Low	28-Feb-10		
CUI Carbon Steel 1 (small bore)	MEDIUM	Medium	TIMEBASED	CATASTROPHIC	Medium	28-Feb-10		
CUI Carbon Steel 1 (small bore)	SMALL	Low	TIMEBASED	SMALL	Low	28-Feb-10		
CUI Carbon Steel 3 (large bore)	MEDIUM	Medium	TIMEBASED	CATASTROPHIC	High	28-Feb-10		



RBIFCGRP_NAME	RBIFC_NAME	IRVALPERCENT	INTERVALFAILURE	INTERVALRISK	RBIMT:SP_NDTTECH
SAFETY	SMALL	200.0	144	144	174 NDT[]DM[Anneal Corrosion]
		144	144	144	144 NDT[]DM[Coating Break-down Interval]
		144	144	144	144 NDT[]DM[Dead legs inc. vessel tinn]
ENVIRONMENT	MEDIUM	200.0	144	144	144 NDT[]DM[Design Issues]
		75.0	144	144	144 NDT[]DM[Anneal Corrosion]
		144	144	144	144 NDT[]DM[Coating Break-down Interval]
ENVIRONMENT	SMALL	200.0	144	144	144 NDT[]DM[Design Issues]
		144	144	144	144 NDT[]DM[Dead legs inc. vessel tinn]
		144	144	144	144 NDT[]DM[Design Issues]

Parameters are set for a specific equipment

Result includes a recommended interval of inspection plus Standard NDT technique